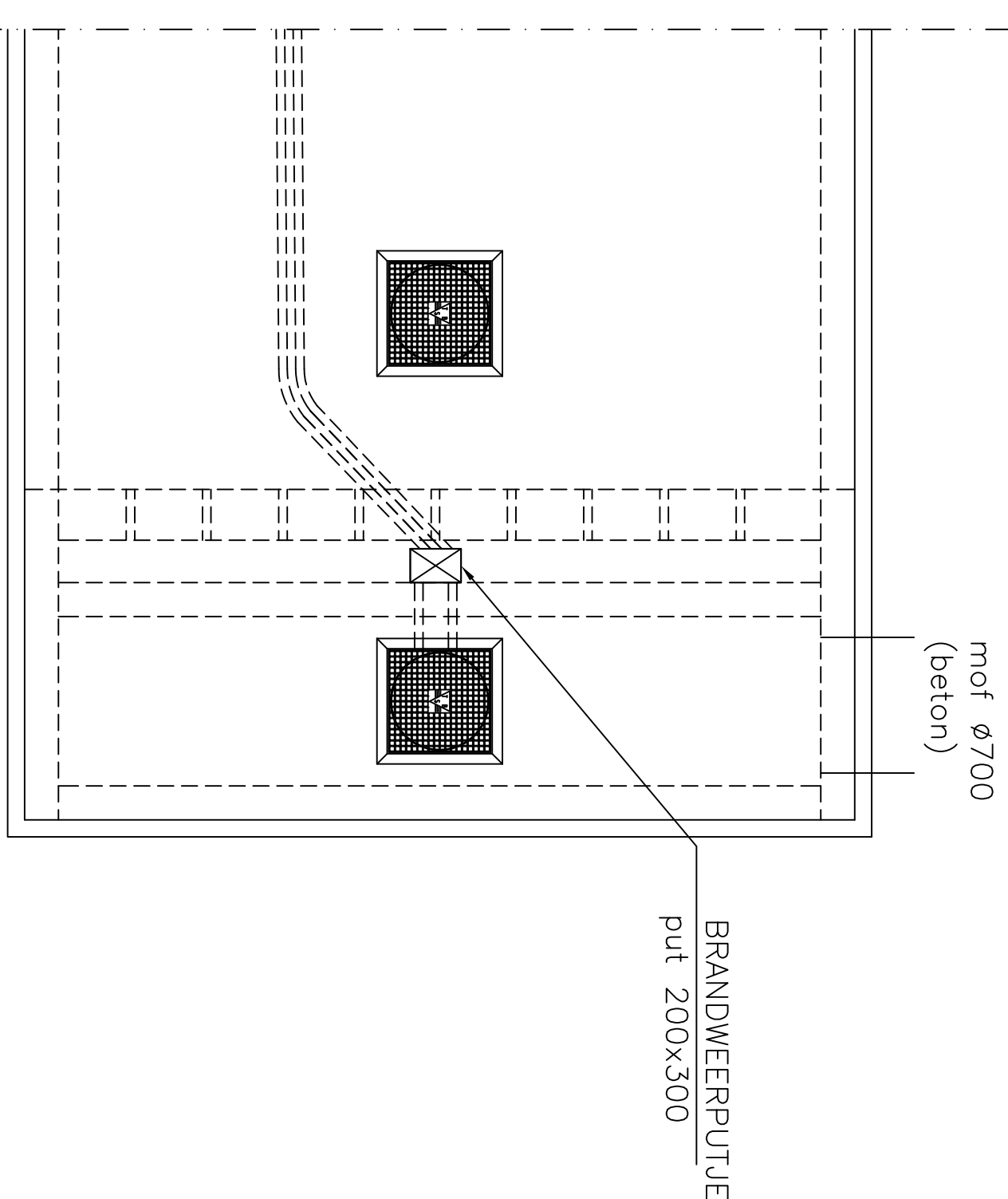
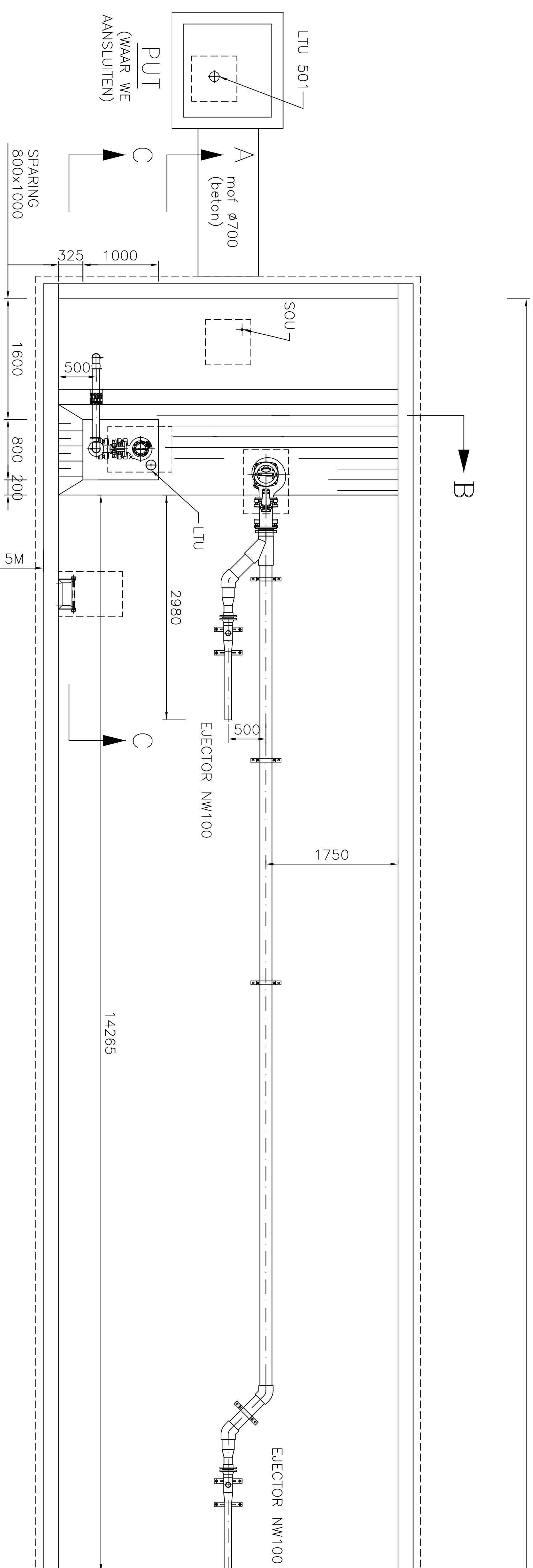
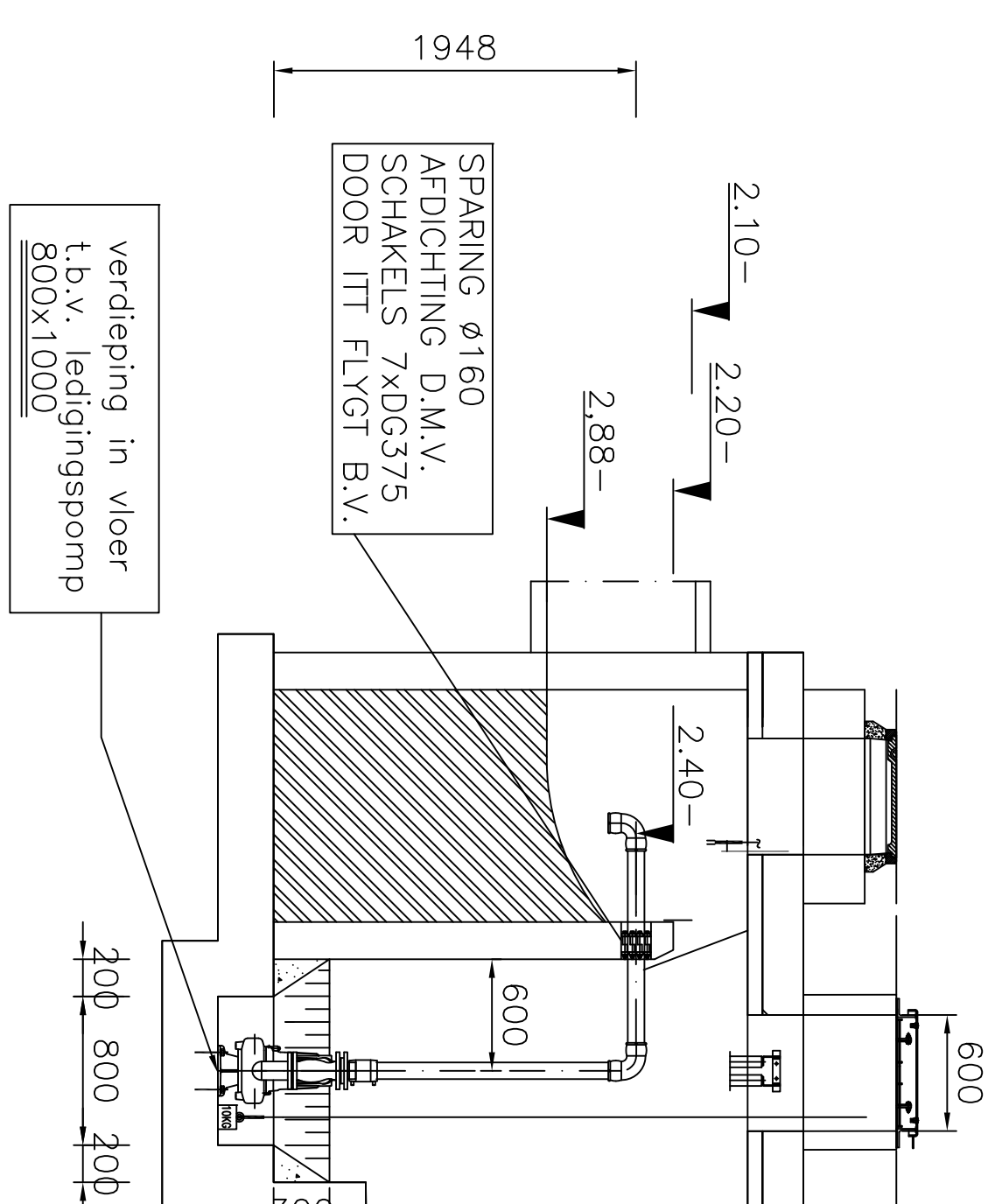
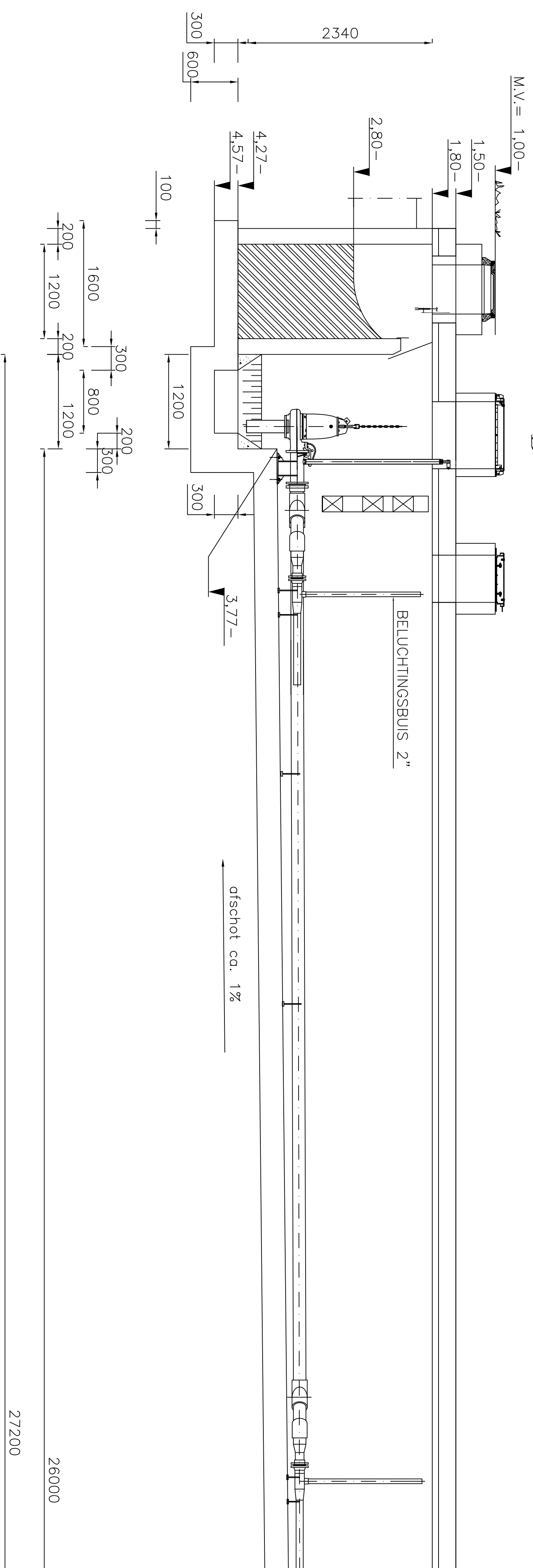
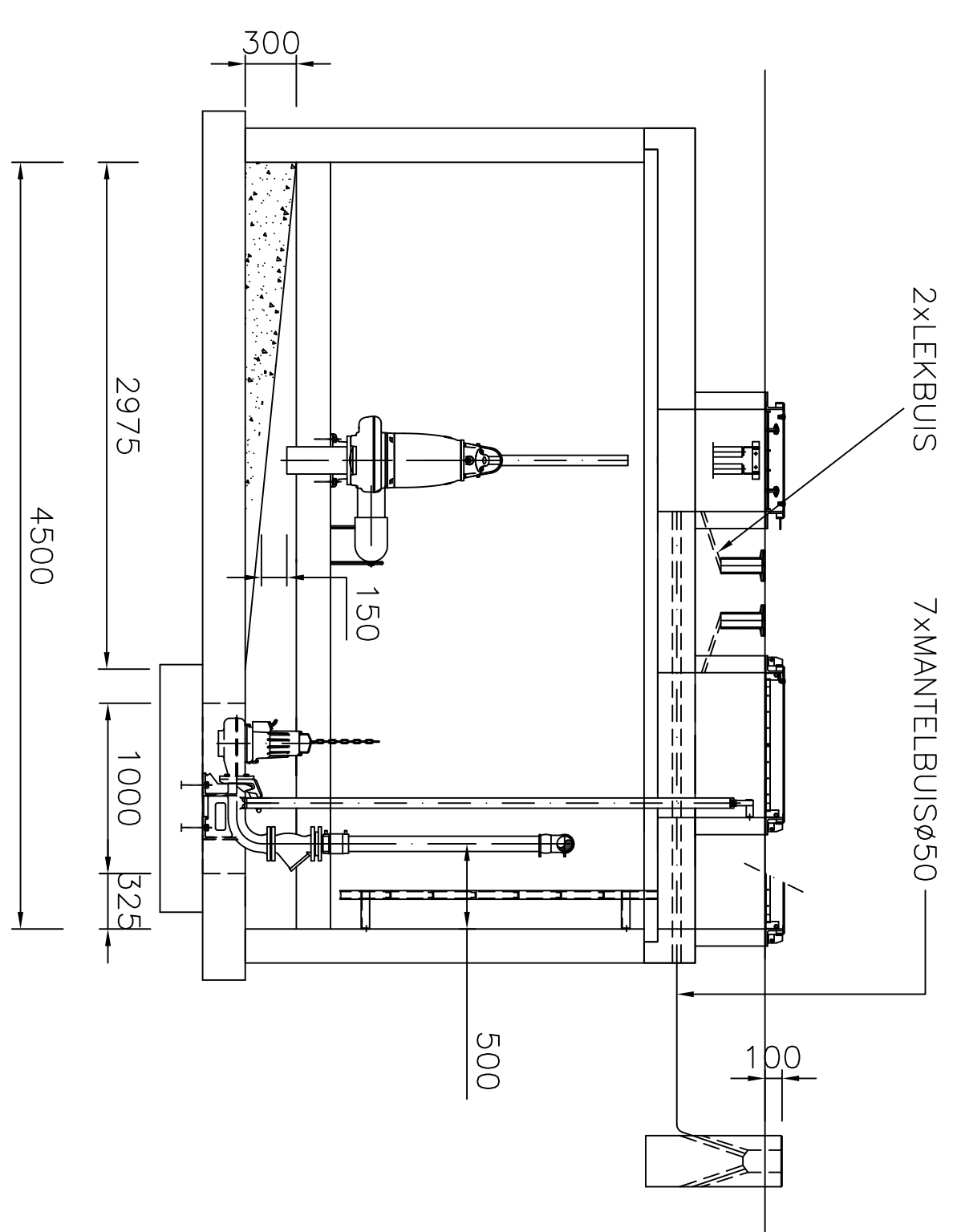
BOVENAANZICHT

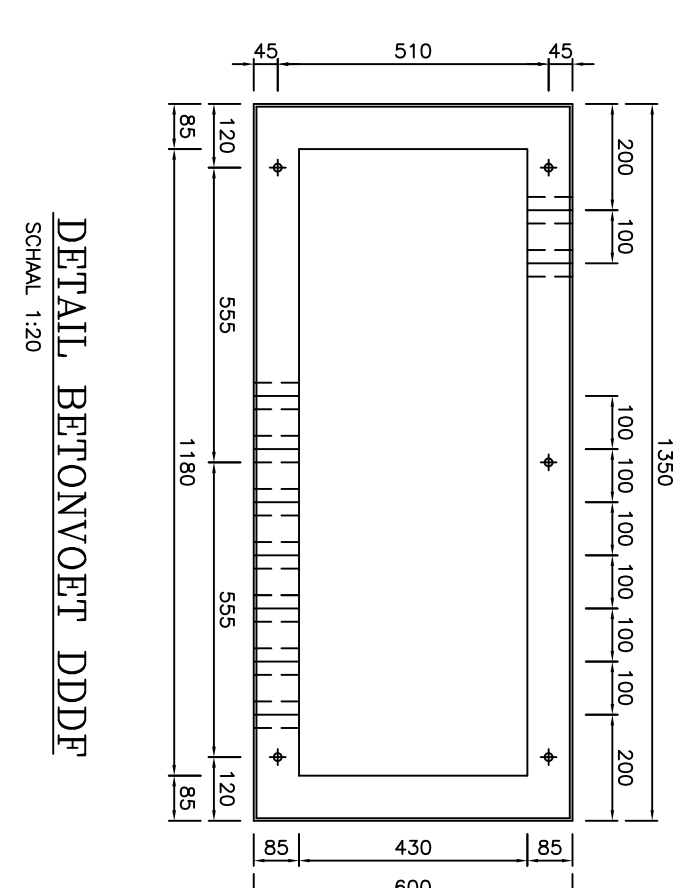
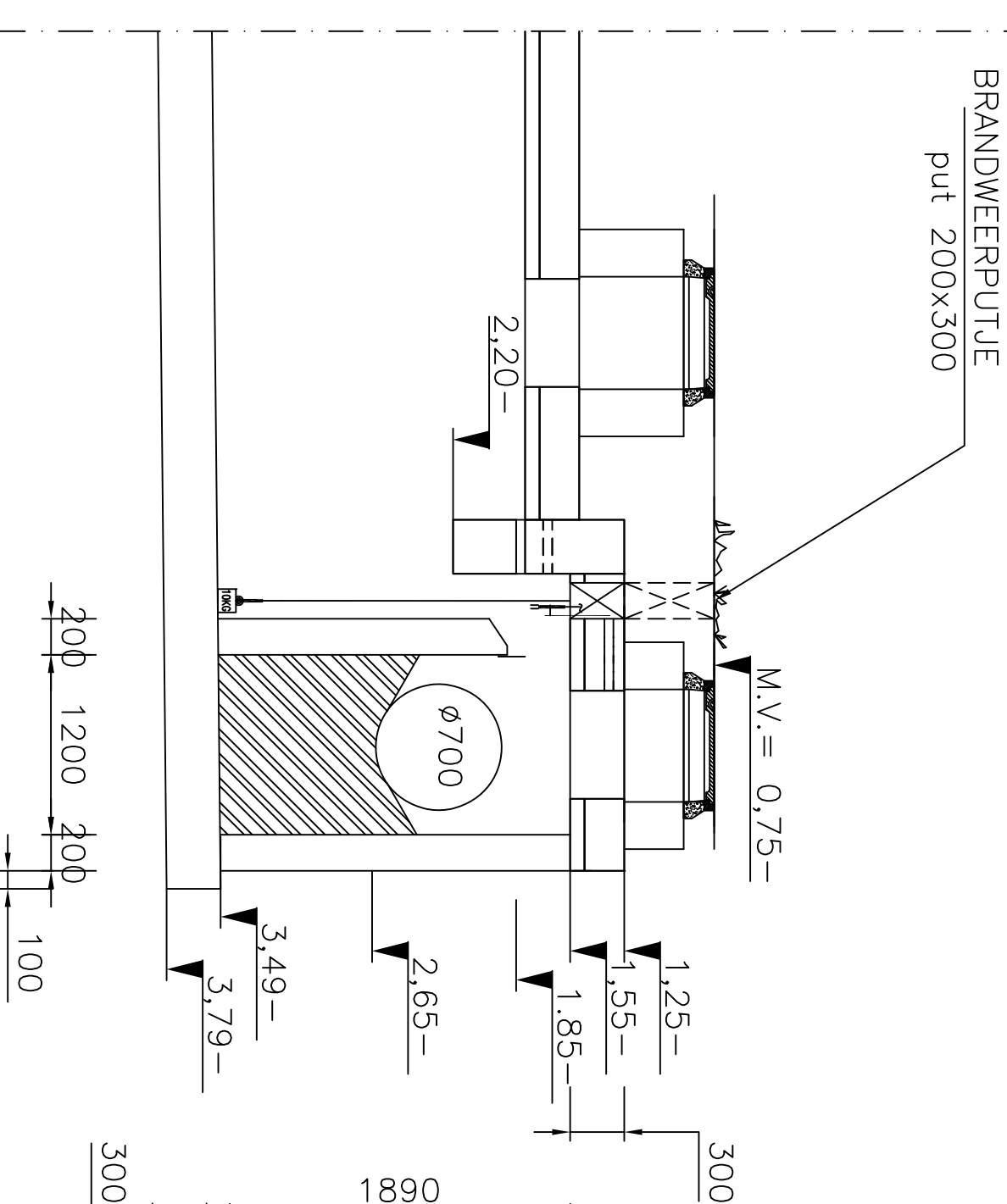
DOORSNEDE C-C



DOORSNEDE B-E



DOORSNEDE A-A



C	03-02-2006	GI	WUZINGEN CONFORM OPERERENGEN KLAANT
B	25-01-2006	GI	WUZINGEN CONFORM OPERERENGEN KLAANT
D	06-03-2006	GI	WUZINGEN CONFORM OPERERENGEN KLAANT
Wiltz Datum		get.	Omschrijving
Opdrachtgever:	GEER. SCHOLIS BV		
	POSTBUS 1250		
	2302 BG LEDDEN		

BODEGRAVEN

SPOELPOMP NP3153.181MT W.433

9kW
NW150/PVCø160 2xJECTOR NW100
LEDIGINGSPOMP DP3068.180MT W.47.5

ITT Flygt B.V.
Postbus 10000

FLYGT

05M0929/0:

Fax: (078) 654 84 00

 **ITT Industries**
Tel. (078) 654 84 00
Fax. (078) 65
E-m

E-mail: flygtnl@flygt.com

Blad: 01 van 03